

# Oldfield Rd between Old West Saanich Rd and Municipal Boundary

March 10, 2019 To March 14, 2019



The data presented here is for information purposes only and should not be considered authoritative for construction, geotechnical, engineering, navigational, legal, or other site-specific uses. The information shared is owned by the Transportation Division of the Engineering Department at the District of Saanich. Accuracy is not guaranteed.

Start Date: 11-Mar-19  
 Start Time: 0:06  
 Station ID: C0054-01

**Location 1: Oldfield Rd between Old West Saanich Rd and Municipal Boundary**

Note: Old West Saanich Rd and Municipal Boundary

DATE:	March 11, 2019		March 12, 2019		March 13, 2019		March 14, 2019		March 15, 2019		WK AVG		WK AVG	HOURLY
	MON		TUE		WED		THURS		FRI		NB		CH 1+2	%
Time:	NB	SB	NB	SB	NB	SB	NB	SB	NB	SB	NB	SB		
12-1 AM					3	3	4	5	5	3	4	4	8	0.2%
1-2 AM					2	1	1	3	1	0	1	1	3	0.1%
2-3 AM					3	1	4	2	3	0	3	1	4	0.1%
3-4 AM					2	2	2	2	6	2	3	2	5	0.2%
4-5 AM					10	4	9	3	10	4	10	4	13	0.4%
5-6 AM					37	5	32	4	43	5	37	5	42	1.3%
6-7 AM					149	17	154	18	143	14	149	16	165	5.3%
7-8 AM					170	62	172	71	172	66	171	66	238	7.6%
8-9 AM					171	102	181	103	186	89	179	98	277	8.9%
9-10 AM					103	81	92	70	110	71	102	74	176	5.6%
10-11 AM					80	66	98	63	93	72	90	67	157	5.0%
11-12 PM					96	84	87	73	90	92	91	83	174	5.6%
12-1 PM					90	92	94	103	91	92	92	96	187	6.0%
1-2 PM					94	85	97	84	86	104	92	91	183	5.9%
2-3 PM					71	106	104	112	96	117	90	112	202	6.5%
3-4 PM					134	167	121	197	132	162	129	175	304	9.7%
4-5 PM					143	211	127	194	161	216	144	207	351	11.2%
5-6 PM					98	174	114	188	106	167	106	176	282	9.0%
6-7 PM					55	76	63	71	53	93	57	80	137	4.4%
7-8 PM					34	34	34	45	38	43	35	41	76	2.4%
8-9 PM					23	22	23	28	37	35	28	28	56	1.8%
9-10 PM					26	23	27	22	31	22	28	22	50	1.6%
10-11 PM					10	9	6	12	14	16	10	12	22	0.7%
11-12 AM					6	5	4	5	1	6	4	5	9	0.3%
<b>LANES</b>					<b>1610</b>	<b>1432</b>	<b>1650</b>	<b>1478</b>	<b>1708</b>	<b>1491</b>	<b>1656</b>	<b>1467</b>	<b>3123</b>	<b>100.0%</b>
<b>TOTAL</b>					<b>3042</b>		<b>3128</b>		<b>3199</b>		<b>3130</b>			
	MON		TUE		WED		THURS		FRI		WK AVG			

PEAK HOUR					TOTAL VEHICALS-PEAK PERIODS		2 HOUR PEAK INTERVALS				
MAX. 7 - 9 am PEAK HOUR	277	⇒	8.9%	between 8-9 AM	1509	⇒	6 HR TOTAL	<b>2 HR AM (7 - 9 AM)</b>			
MAX. 7 - 11 am PEAK HOUR	277	⇒	8.9%	between 8-9 AM	1148	⇒	4 HR TOTAL	VEH / HR	VEH / 2HR	2 HR %	
MAX. 11 am - 1 pm PEAK HOUR	187	⇒	6.0%	between 12-1 PM				7-8 AM	238	515	16.5%
MAX. 11 am - 3 pm PEAK HOUR	202	⇒	6.5%	between 2-3 PM				8-9 AM	277		
MAX. 4 - 6 pm PEAK HOUR	351	⇒	11.2%	between 4-5 PM				<b>2 HR NOON (11 - 1 PM)</b>			
MAX. 3 - 6 pm PEAK HOUR	351	⇒	11.2%	between 4-5 PM				VEH / HR	VEH / 2HR	2 HR %	
								11-12 PM	174	361	11.6%
								12-1 PM	187		
								<b>2 HR PM (4 - 6 PM)</b>			
								VEH / HR	VEH / 2HR	2 HR %	
								4-5 PM	351	633	20.3%
								5-6 PM	282		

# Oldfield Rd between Old West Saanich Rd and Municipal Boundary

Northbound

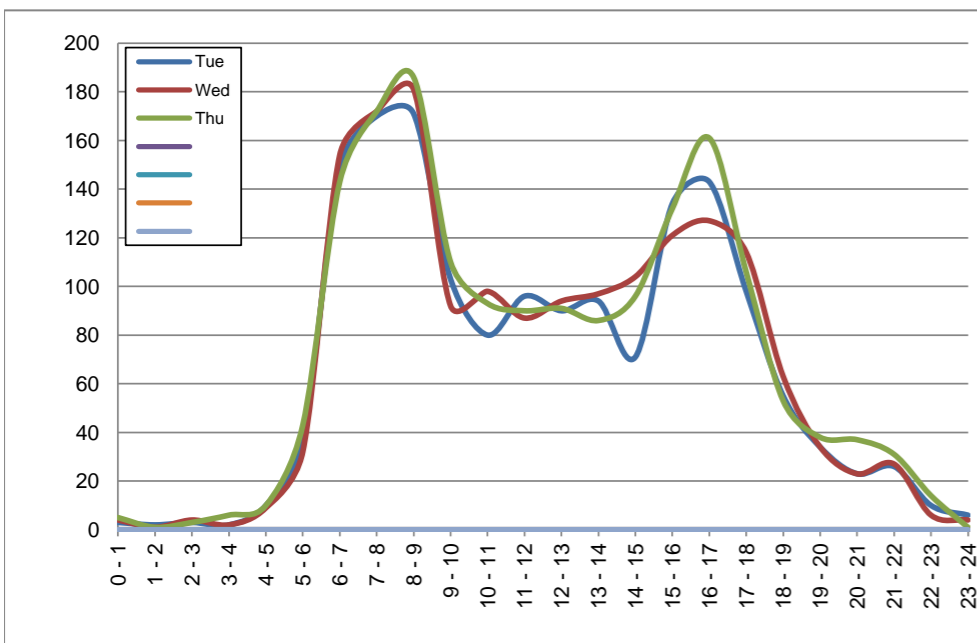
March 12, 2019 to March 14, 2019

## Hourly Volumes

Time Period	Tue	Wed	Thu				
	Mar 12	Mar 13	Mar 14				
0 - 1	3	4	5				
1 - 2	2	1	1				
2 - 3	3	4	3				
3 - 4	2	2	6				
4 - 5	10	9	10				
5 - 6	37	32	43				
6 - 7	149	154	143				
7 - 8	170	172	172				
8 - 9	171	181	186				
9 - 10	103	92	110				
10 - 11	80	98	93				
11 - 12	96	87	90				
12 - 13	90	94	91				
13 - 14	94	97	86				
14 - 15	71	104	96				
15 - 16	134	121	132				
16 - 17	143	127	161				
17 - 18	98	114	106				
18 - 19	55	63	53				
19 - 20	34	34	38				
20 - 21	23	23	37				
21 - 22	26	27	31				
22 - 23	10	6	14				
23 - 24	6	4	1				
<b>Day Total</b>	<b>1610</b>	<b>1650</b>	<b>1708</b>				

## 15-Minute Volumes

Time Start	Tue	Wed	Thu				
	Mar 12	Mar 13	Mar 14				
0:00	0	1	1				
0:15	0	0	1				
0:30	2	0	0				
0:45	1	3	3				
1:00	0	0	0				
1:15	0	0	0				
1:30	1	1	1				
1:45	1	0	0				
2:00	1	0	0				
2:15	0	0	0				
2:30	1	3	2				
2:45	1	1	1				
3:00	1	2	1				
3:15	0	0	1				
3:30	0	0	1				
3:45	1	0	3				
4:00	1	1	1				
4:15	1	1	1				
4:30	5	4	6				
4:45	3	3	2				
5:00	0	0	1				
5:15	6	5	13				
5:30	19	16	12				
5:45	12	11	17				
6:00	18	24	22				
6:15	33	30	30				
6:30	50	49	42				
6:45	48	51	49				
7:00	33	41	29				
7:15	45	42	42				
7:30	35	34	41				
7:45	57	55	60				
8:00	43	52	40				
8:15	36	46	46				
8:30	45	37	55				
8:45	47	46	45				
9:00	30	25	29				
9:15	29	27	30				
9:30	26	20	30				
9:45	18	20	21				
10:00	21	29	30				
10:15	17	23	19				
10:30	17	21	18				
10:45	25	25	26				
11:00	20	27	21				
11:15	30	17	26				
11:30	20	21	25				
11:45	26	22	18				
12:00	24	28	16				
12:15	26	26	20				
12:30	18	22	28				
12:45	22	18	27				
13:00	31	27	24				
13:15	23	21	15				
13:30	23	28	24				
13:45	17	21	23				
14:00	13	27	20				
14:15	17	17	25				
14:30	23	23	21				
14:45	18	37	30				
15:00	30	41	32				
15:15	29	25	28				
15:30	34	29	31				
15:45	41	26	41				
16:00	39	34	48				
16:15	36	34	47				
16:30	32	28	35				
16:45	36	31	31				
17:00	26	31	34				
17:15	30	26	30				
17:30	24	30	21				
17:45	18	27	21				
18:00	15	8	14				
18:15	15	21	17				
18:30	17	18	7				
18:45	8	16	15				
19:00	12	10	14				
19:15	12	11	9				
19:30	6	3	6				
19:45	4	10	9				
20:00	4	5	7				
20:15	8	4	7				
20:30	7	10	11				
20:45	4	4	12				
21:00	8	10	5				
21:15	8	11	11				
21:30	6	2	6				
21:45	4	4	9				
22:00	6	2	6				
22:15	1	0	2				
22:30	1	2	6				
22:45	2	2	0				
23:00	1	1	1				
23:15	2	1	0				
23:30	1	1	0				
23:45	2	1	0				



Site notes:

# Oldfield Rd between Old West Saanich Rd and Municipal Boundary

Southbound

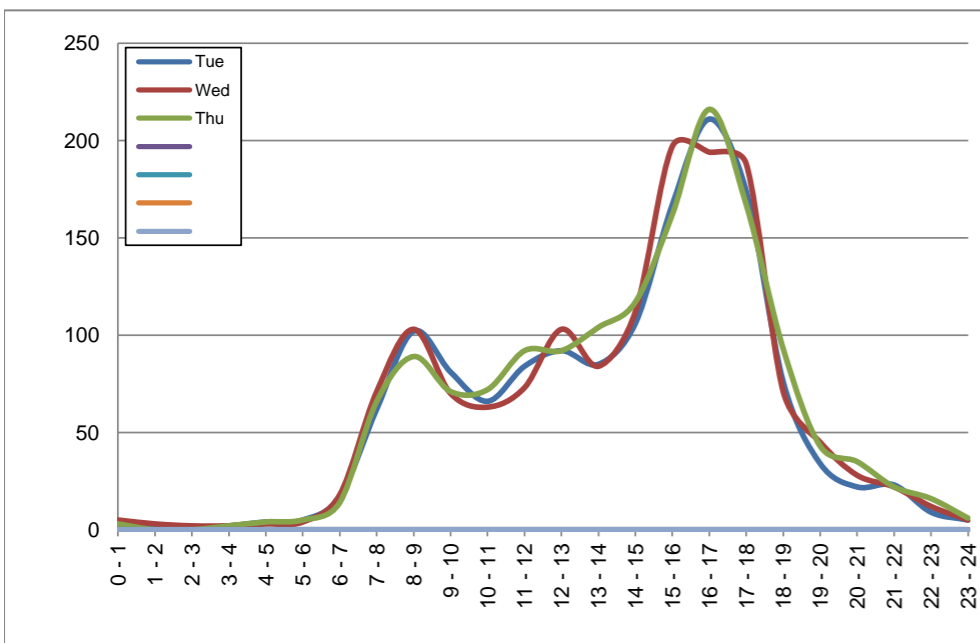
March 12, 2019 to March 14, 2019

## Hourly Volumes

Time Period	Tue	Wed	Thu				
	Mar 12	Mar 13	Mar 14				
0 - 1	3	5	3				
1 - 2	1	3	0				
2 - 3	1	2	0				
3 - 4	2	2	2				
4 - 5	4	3	4				
5 - 6	5	4	5				
6 - 7	17	18	14				
7 - 8	62	71	66				
8 - 9	102	103	89				
9 - 10	81	70	71				
10 - 11	66	63	72				
11 - 12	84	73	92				
12 - 13	92	103	92				
13 - 14	85	84	104				
14 - 15	106	112	117				
15 - 16	167	197	162				
16 - 17	211	194	216				
17 - 18	174	188	167				
18 - 19	76	71	93				
19 - 20	34	45	43				
20 - 21	22	28	35				
21 - 22	23	22	22				
22 - 23	9	12	16				
23 - 24	5	5	6				
<b>Day Total</b>	<b>1432</b>	<b>1478</b>	<b>1491</b>				

## 15-Minute Volumes

Time Start	Tue	Wed	Thu				
	Mar 12	Mar 13	Mar 14				
0:00	2	3	0				
0:15	0	0	2				
0:30	0	0	0				
0:45	1	2	1				
1:00	1	1	0				
1:15	0	2	0				
1:30	0	0	0				
1:45	0	0	0				
2:00	0	1	0				
2:15	1	0	0				
2:30	0	0	0				
2:45	0	1	0				
3:00	1	0	0				
3:15	0	1	0				
3:30	1	1	2				
3:45	0	0	0				
4:00	0	0	2				
4:15	4	3	1				
4:30	0	0	1				
4:45	0	0	0				
5:00	0	0	0				
5:15	2	0	1				
5:30	1	0	2				
5:45	2	4	2				
6:00	2	3	1				
6:15	0	1	5				
6:30	8	6	3				
6:45	7	8	5				
7:00	11	11	10				
7:15	17	16	20				
7:30	16	21	14				
7:45	18	23	22				
8:00	26	21	30				
8:15	24	21	21				
8:30	28	31	22				
8:45	24	30	16				
9:00	27	14	19				
9:15	26	20	20				
9:30	12	18	16				
9:45	16	18	16				
10:00	17	12	20				
10:15	19	20	20				
10:30	16	11	16				
10:45	14	20	16				
11:00	22	19	22				
11:15	25	17	18				
11:30	19	16	22				
11:45	18	21	30				
12:00	22	30	18				
12:15	23	23	23				
12:30	23	23	22				
12:45	24	27	29				
13:00	21	24	28				
13:15	18	22	22				
13:30	21	23	24				
13:45	25	15	30				
14:00	22	21	29				
14:15	29	26	30				
14:30	27	22	29				
14:45	28	43	29				
15:00	23	36	34				
15:15	38	49	37				
15:30	54	62	51				
15:45	52	50	40				
16:00	63	49	65				
16:15	39	52	53				
16:30	63	51	55				
16:45	46	42	43				
17:00	62	65	53				
17:15	52	50	42				
17:30	34	37	37				
17:45	26	36	35				
18:00	22	22	29				
18:15	22	17	30				
18:30	13	11	17				
18:45	19	21	17				
19:00	8	14	16				
19:15	18	21	14				
19:30	5	4	8				
19:45	3	6	5				
20:00	9	10	13				
20:15	4	9	9				
20:30	5	7	11				
20:45	4	2	2				
21:00	9	6	7				
21:15	6	7	6				
21:30	4	6	7				
21:45	4	3	2				
22:00	3	5	6				
22:15	1	2	3				
22:30	4	4	2				
22:45	1	1	5				
23:00	2	2	2				
23:15	1	1	1				
23:30	1	1	2				
23:45	1	1	1				



Site notes:

# Vehicle Speed Summary

Saanich Engineering Department

Count Id: C0054-01

Filename: Oldfield Rd between Old West Saanich Rd and Municipal Boundary-Mar-2019.xlsm

**Location:** Oldfield Rd between Old West Saanich Rd and Municipal Boundary

Note: Old West Saanich Rd and Municipal Boundary

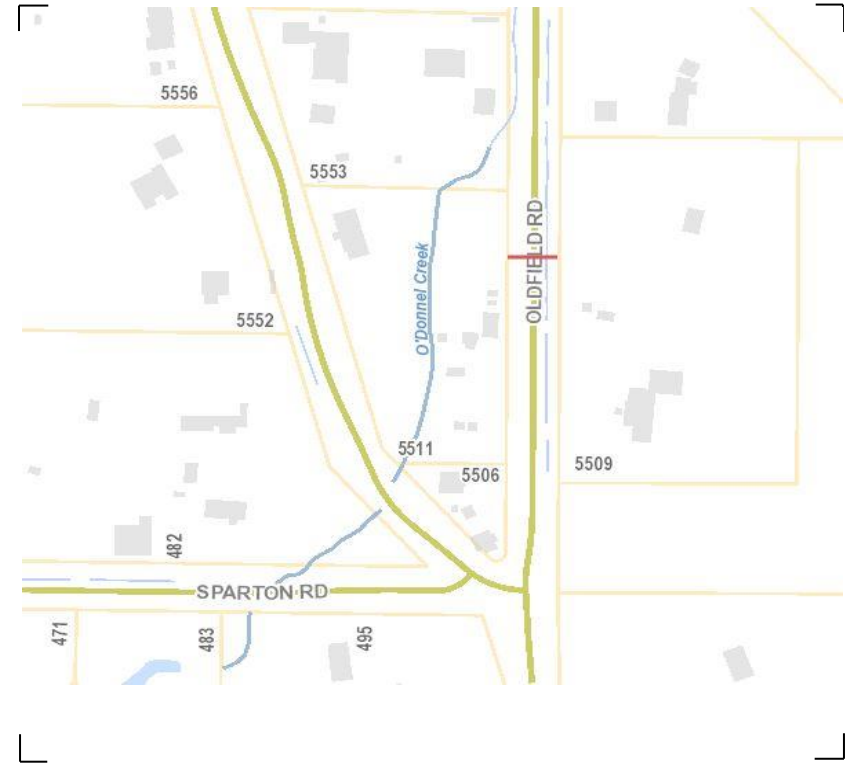
Direction: **North-South**

Dates: **March 10, 2019 To March 14, 2019**

*Filtered data*

AVG. SPEED	<b>36</b> mph	<b>58</b> km/h
50 % SPEED	<b>36</b> mph	<b>58</b> km/h
85 % SPEED	<b>40</b> mph	<b>65</b> km/h
95 % SPEED	<b>44</b> mph	<b>70</b> km/h

Location Map



**Oldfield Rd between Old West Saanich Rd and Municipal Boundary**

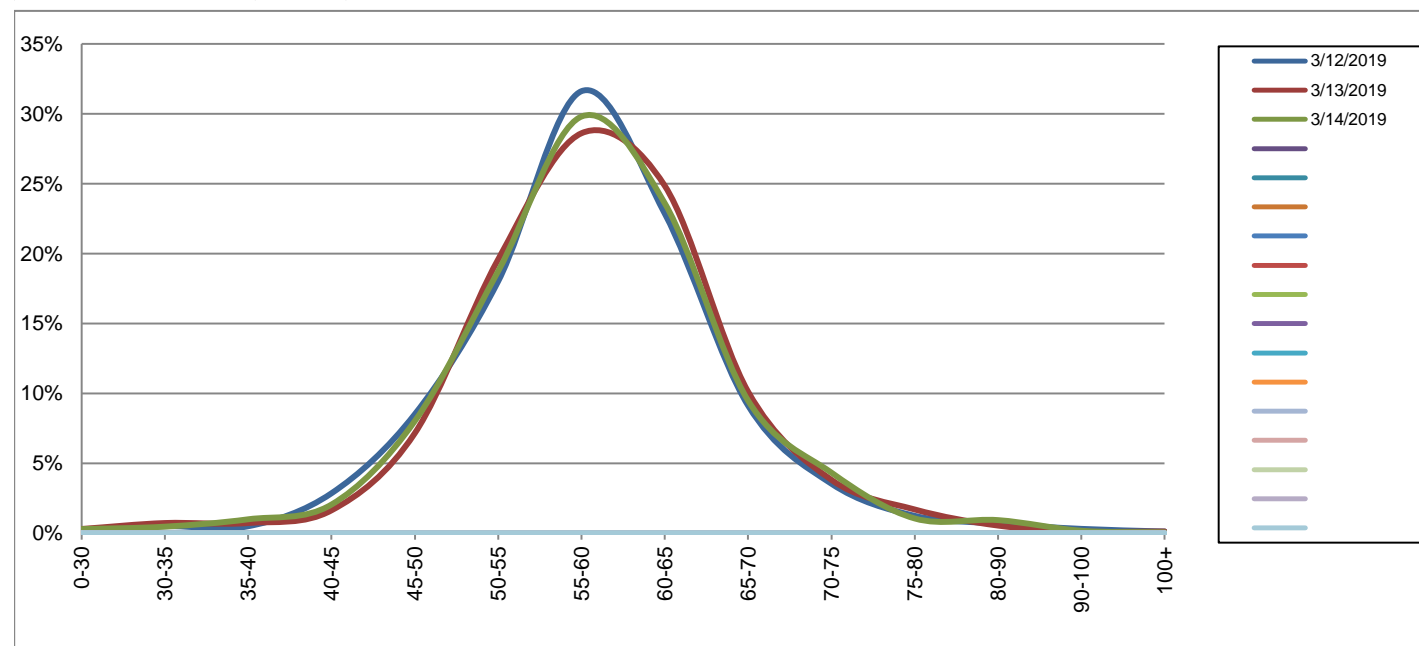
Northbound

March 12, 2019 to March 14, 2019

Daily Speed Bin Percentages															Daily Speed Bin Volumes														Total	Avg.
Bin #	1	2	3	4	5	6	7	8	9	10	11	12	13	14	1	2	3	4	5	6	7	8	9	10	11	12	13	14	Volume	Speed
Bin Speeds	0-30	30-35	35-40	40-45	45-50	50-55	55-60	60-65	65-70	70-75	75-80	80-90	90-100	100+	0-30	30-35	35-40	40-45	45-50	50-55	55-60	60-65	65-70	70-75	75-80	80-90	90-100	100+		
3/12/2019	0.1%	0.5%	0.5%	2.9%	8.5%	18.0%	31.6%	22.9%	9.1%	3.5%	1.2%	0.7%	0.3%	0.1%	2	8	8	46	137	290	509	368	147	57	20	11	5	2	1610	58
3/13/2019	0.3%	0.7%	0.7%	1.6%	7.2%	19.6%	28.6%	24.8%	10.1%	3.8%	1.7%	0.5%	0.1%	0.1%	5	12	12	27	118	323	472	410	167	63	28	9	2	2	1650	59
3/14/2019	0.3%	0.5%	1.0%	2.0%	8.0%	18.7%	29.8%	23.6%	9.5%	4.3%	1.1%	0.9%	0.2%	0.1%	5	8	17	35	137	320	509	403	162	74	18	16	3	1	1708	58
<b>Total</b>	0.2%	0.6%	0.7%	2.2%	7.9%	18.8%	30.0%	23.8%	9.6%	3.9%	1.3%	0.7%	0.2%	0.1%	12	28	37	108	392	933	1490	1181	476	194	66	36	10	5	4968	58

**Speed Data Summary**

Bin #	1	2	3	4	5	6	7	8	9	10	11	12	13	14	Total
Bin Speeds	0-30	30-35	35-40	40-45	45-50	50-55	55-60	60-65	65-70	70-75	75-80	80-90	90-100	100+	
Survey Total	12	28	37	108	392	933	1490	1181	476	194	66	36	10	5	4968
% Total	0.2%	0.6%	0.7%	2.2%	7.9%	18.8%	30.0%	23.8%	9.6%	3.9%	1.3%	0.7%	0.2%	0.1%	100%
Accumulated %	0.2%	0.8%	1.5%	3.7%	11.6%	30.4%	60.4%	84.2%	93.7%	97.6%	99.0%	99.7%	99.9%	100%	
Inverse Accum. %	99.8%	99.2%	98.5%	96.3%	88.4%	69.6%	39.6%	15.8%	6.3%	2.4%	1.0%	0.3%	0.1%	0.0%	
Average Speed	58 KM/H														



Site notes:

**Oldfield Rd between Old West Saanich Rd and Municipal Boundary**

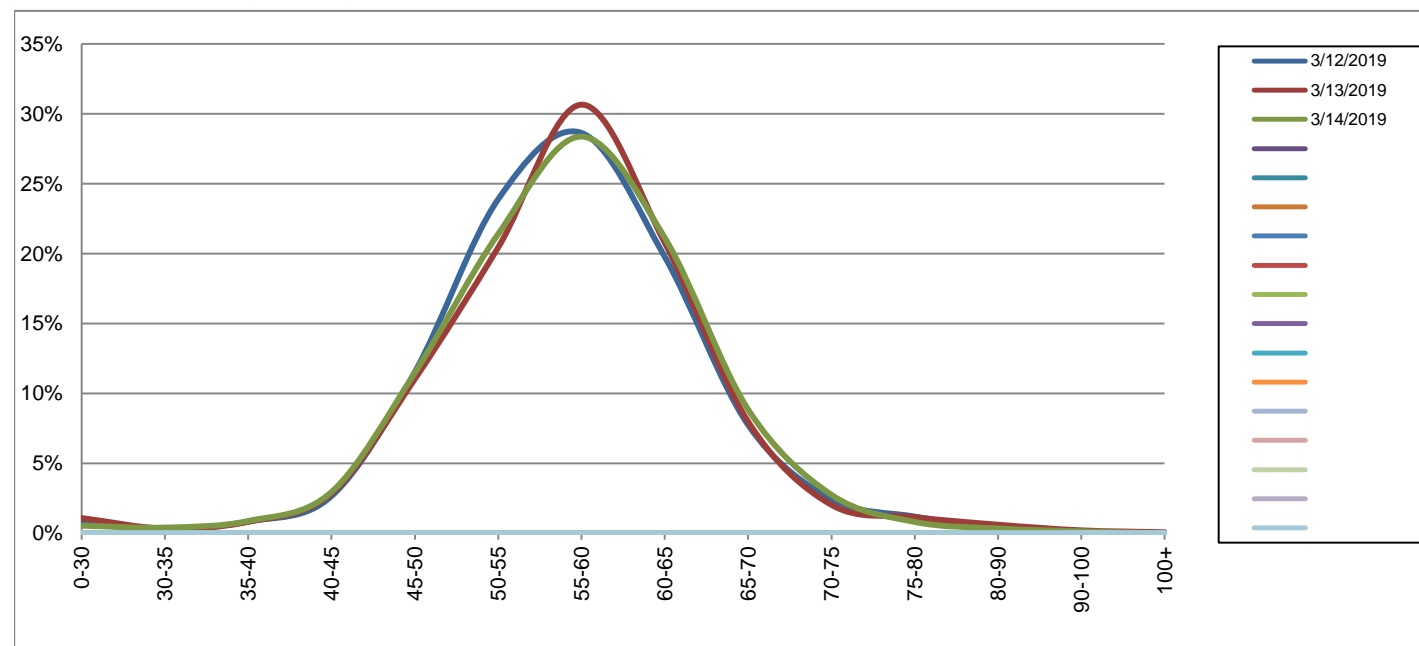
Southbound

March 12, 2019 to March 14, 2019

Daily Speed Bin Percentages														Daily Speed Bin Volumes														Total	Avg.	
Bin #	1	2	3	4	5	6	7	8	9	10	11	12	13	14	1	2	3	4	5	6	7	8	9	10	11	12	13	14	Volume	Speed
Bin Speeds	0-30	30-35	35-40	40-45	45-50	50-55	55-60	60-65	65-70	70-75	75-80	80-90	90-100	100+	0-30	30-35	35-40	40-45	45-50	50-55	55-60	60-65	65-70	70-75	75-80	80-90	90-100	100+		
3/12/2019	0.7%	0.3%	0.8%	2.7%	11.5%	23.9%	28.6%	19.8%	7.8%	2.4%	1.2%	0.3%	0.0%	0.0%	10	4	12	38	165	342	410	283	111	35	17	5	0	0	1432	57
3/13/2019	1.1%	0.3%	0.8%	2.8%	11.0%	20.4%	30.6%	20.8%	8.0%	2.0%	1.2%	0.6%	0.2%	0.1%	16	5	12	42	163	302	453	307	118	30	17	9	3	1	1478	57
3/14/2019	0.5%	0.4%	0.9%	3.0%	11.5%	21.4%	28.4%	21.1%	8.9%	2.7%	0.8%	0.3%	0.1%	0.0%	8	6	13	44	171	319	423	315	132	41	12	5	2	0	1491	57
<b>Total</b>	<b>0.8%</b>	<b>0.3%</b>	<b>0.8%</b>	<b>2.8%</b>	<b>11.3%</b>	<b>21.9%</b>	<b>29.2%</b>	<b>20.6%</b>	<b>8.2%</b>	<b>2.4%</b>	<b>1.0%</b>	<b>0.4%</b>	<b>0.1%</b>	<b>0.0%</b>	<b>34</b>	<b>15</b>	<b>37</b>	<b>124</b>	<b>499</b>	<b>963</b>	<b>1286</b>	<b>905</b>	<b>361</b>	<b>106</b>	<b>46</b>	<b>19</b>	<b>5</b>	<b>1</b>	<b>4401</b>	<b>57</b>

**Speed Data Summary**

Bin #	1	2	3	4	5	6	7	8	9	10	11	12	13	14	Total
Bin Speeds	0-30	30-35	35-40	40-45	45-50	50-55	55-60	60-65	65-70	70-75	75-80	80-90	90-100	100+	
Survey Total	34	15	37	124	499	963	1286	905	361	106	46	19	5	1	4401
% Total	0.8%	0.3%	0.8%	2.8%	11.3%	21.9%	29.2%	20.6%	8.2%	2.4%	1.0%	0.4%	0.1%	0.0%	100%
Accumulated %	0.8%	1.1%	2.0%	4.8%	16.1%	38.0%	67.2%	87.8%	96.0%	98.4%	99.4%	99.9%	100.0%	100%	
Inverse Accum. %	99.2%	98.9%	98.0%	95.2%	83.9%	62.0%	32.8%	12.2%	4.0%	1.6%	0.6%	0.1%	0.0%	0.0%	
Average Speed	57 KM/H														



Site notes:

Oldfield Rd between Old West Saanich Rd and Municipal Boundary

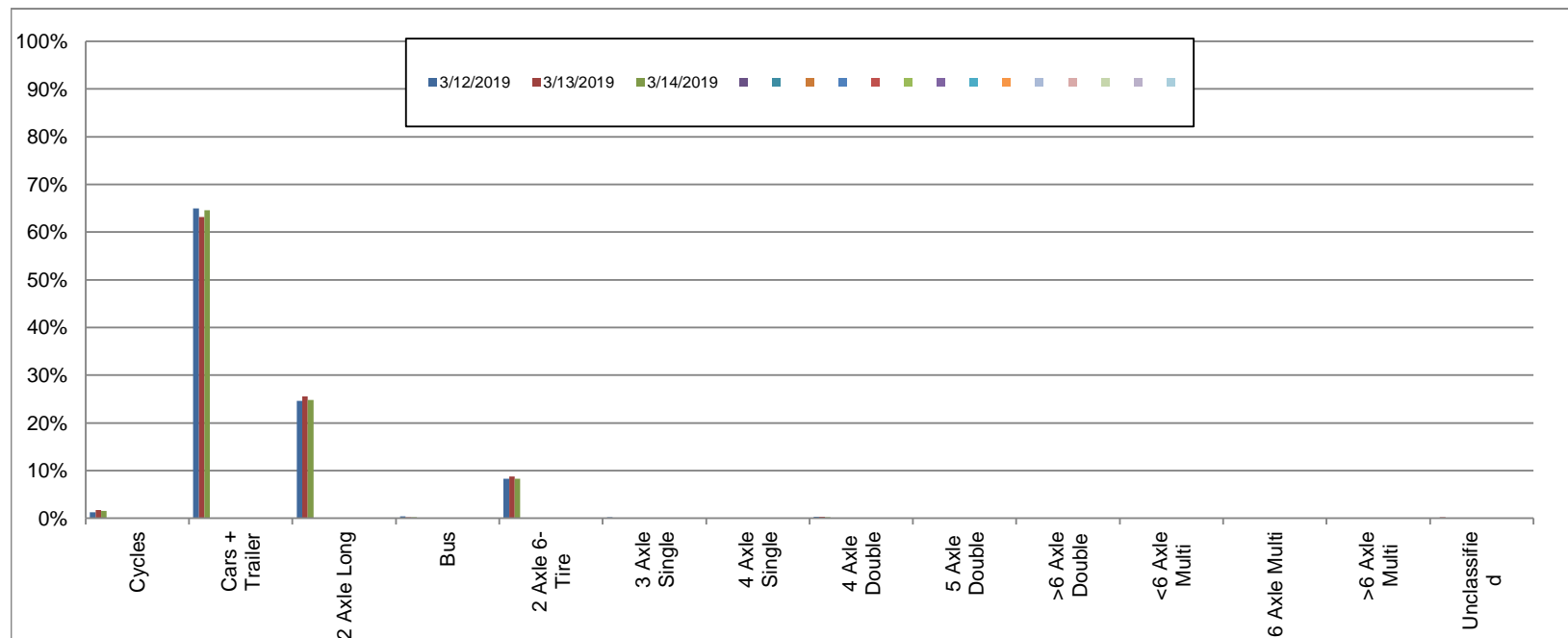
Northbound

March 12, 2019 to March 14, 2019

Daily Class Bin Percentages															Daily Class Bin Volumes														
Bin #	1	2	3	4	5	6	7	8	9	10	11	12	13	14	1	2	3	4	5	6	7	8	9	10	11	12	13	14	Total Volume
Bin Class	Cycles	Cars + Trailer	2 Axle Long	Bus	2 Axle 6-Tire	3 Axle Single	4 Axle Single	4 Axle Double	5 Axle Double	>6 Axle Double	<6 Axle Multi	6 Axle Multi	>6 Axle Multi	Unclassified	Cycles	Cars + Trailer	2 Axle Long	Bus	2 Axle 6-Tire	3 Axle Single	4 Axle Single	4 Axle Double	5 Axle Double	>6 Axle Double	<6 Axle Multi	6 Axle Multi	>6 Axle Multi	Unclassified	
3/12/2019	1.2%	65.0%	24.6%	0.4%	8.3%	0.2%	0.0%	0.3%	0.0%	0.0%	0.0%	0.0%	0.0%	0.0%	20	1046	396	7	133	3	0	5	0	0	0	0	0	0	1610
3/13/2019	1.7%	63.2%	25.6%	0.2%	8.7%	0.1%	0.0%	0.3%	0.0%	0.0%	0.0%	0.0%	0.0%	0.2%	28	1042	422	4	144	2	0	5	0	0	0	0	0	3	1650
3/14/2019	1.5%	64.6%	24.8%	0.2%	8.3%	0.1%	0.1%	0.2%	0.1%	0.0%	0.0%	0.0%	0.0%	0.1%	26	1103	424	4	142	2	1	3	1	0	0	0	0	2	1708
<b>Total</b>	1.5%	64.2%	25.0%	0.3%	8.4%	0.1%	0.0%	0.3%	0.0%	0.0%	0.0%	0.0%	0.0%	0.1%	74	3191	1242	15	419	7	1	13	1	0	0	0	0	5	4968

Class Data Summary

Bin #	1	2	3	4	5	6	7	8	9	10	11	12	13	14	Total Volume
Bin Class	Cycles	Cars + Trailer	2 Axle Long	Bus	2 Axle 6-Tire	3 Axle Single	4 Axle Single	4 Axle Double	5 Axle Double	>6 Axle Double	<6 Axle Multi	6 Axle Multi	>6 Axle Multi	Unclassified	Total Volume
<b>Survey Total</b>	74	3191	1242	15	419	7	1	13	1	0	0	0	0	5	4968
<b>% Total</b>	1.5%	64.2%	25.0%	0.3%	8.4%	0.1%	0.0%	0.3%	0.0%	0.0%	0.0%	0.0%	0.0%	0.1%	100%
<b>Accumulated %</b>	1.5%	65.7%	90.7%	91.0%	99.5%	99.6%	99.6%	99.9%	99.9%	99.9%	99.9%	99.9%	99.9%	100.0%	
<b>Inv. Accum. %</b>	98.5%	34.3%	9.3%	9.0%	0.5%	0.4%	0.4%	0.1%	0.1%	0.1%	0.1%	0.1%	0.1%	0.0%	



Classification Descriptions

Bin #	Bin Description
1	Motorcycles
2	Passenger cars, including those with recreational trailers
3	2-axle pick-ups, vans, and RVs, including those with recreational trailers
4	Buses
5	2-axle, 6-tire single units
6	3-axle single units
7	4-axle single units
8	3-axle or 4-axle double unit
9	5-axle double unit
10	6-, 7-, or 8-axle double unit
11	5-axle multiple unit
12	6-axle multiple unit
13	7-or-more-axle multiple unit
14	Vehicles that could not be classified

Site notes:



Oldfield Rd between Old West Saanich Rd and Municipal Boundary

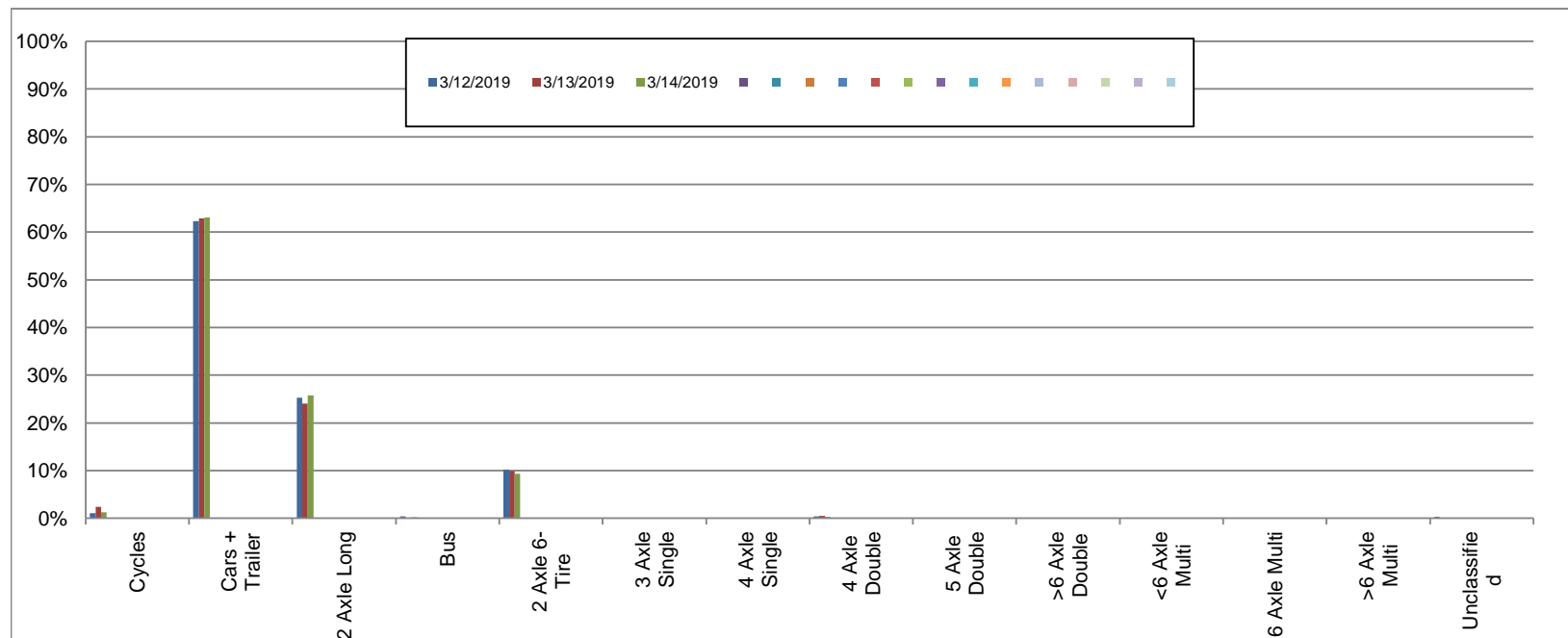
Southbound

March 12, 2019 to March 14, 2019

Daily Class Bin Percentages															Daily Class Bin Volumes															
Bin #	1	2	3	4	5	6	7	8	9	10	11	12	13	14	1	2	3	4	5	6	7	8	9	10	11	12	13	14	Total Volume	
Bin Class	Cycles	Cars + Trailer	2 Axle Long	Bus	2 Axle 6-Tire	3 Axle Single	4 Axle Single	4 Axle Double	5 Axle Double	>6 Axle Double	<6 Axle Multi	6 Axle Multi	>6 Axle Multi	Unclassified	Cycles	Cars + Trailer	2 Axle Long	Bus	2 Axle 6-Tire	3 Axle Single	4 Axle Single	4 Axle Double	5 Axle Double	>6 Axle Double	<6 Axle Multi	6 Axle Multi	>6 Axle Multi	Unclassified		
3/12/2019	1.0%	62.3%	25.3%	0.4%	10.2%	0.0%	0.0%	0.4%	0.1%	0.0%	0.0%	0.0%	0.0%	0.3%	15	892	362	6	146	0	0	6	1	0	0	0	0	0	4	1432
3/13/2019	2.4%	62.9%	24.1%	0.1%	9.9%	0.1%	0.0%	0.5%	0.0%	0.0%	0.0%	0.0%	0.0%	0.1%	35	929	356	1	146	2	0	7	0	0	0	0	0	0	2	1478
3/14/2019	1.3%	63.1%	25.8%	0.2%	9.3%	0.0%	0.0%	0.3%	0.0%	0.0%	0.0%	0.0%	0.0%	0.1%	19	941	384	3	139	0	0	4	0	0	0	0	0	0	1	1491
<b>Total</b>	1.6%	62.8%	25.0%	0.2%	9.8%	0.0%	0.0%	0.4%	0.0%	0.0%	0.0%	0.0%	0.0%	0.2%	69	2762	1102	10	431	2	0	17	1	0	0	0	0	7	4401	

Class Data Summary

Bin #	1	2	3	4	5	6	7	8	9	10	11	12	13	14	Total Volume
Bin Class	Cycles	Cars + Trailer	2 Axle Long	Bus	2 Axle 6-Tire	3 Axle Single	4 Axle Single	4 Axle Double	5 Axle Double	>6 Axle Double	<6 Axle Multi	6 Axle Multi	>6 Axle Multi	Unclassified	Total Volume
<b>Survey Total</b>	69	2762	1102	10	431	2	0	17	1	0	0	0	0	7	4401
<b>% Total</b>	1.6%	62.8%	25.0%	0.2%	9.8%	0.0%	0.0%	0.4%	0.0%	0.0%	0.0%	0.0%	0.0%	0.2%	100%
<b>Accumulated %</b>	1.6%	64.3%	89.4%	89.6%	99.4%	99.4%	99.4%	99.8%	99.8%	99.8%	99.8%	99.8%	99.8%	100.0%	
<b>Inv. Accum. %</b>	98.4%	35.7%	10.6%	10.4%	0.6%	0.6%	0.6%	0.2%	0.2%	0.2%	0.2%	0.2%	0.2%	0.0%	



Classification Descriptions

Bin #	Bin Description
1	Motorcycles
2	Passenger cars, including those with recreational trailers
3	2-axle pick-ups, vans, and RVs, including those with recreational trailers
4	Buses
5	2-axle, 6-tire single units
6	3-axle single units
7	4-axle single units
8	3-axle or 4-axle double unit
9	5-axle double unit
10	6-, 7-, or 8-axle double unit
11	5-axle multiple unit
12	6-axle multiple unit
13	7-or-more-axle multiple unit
14	Vehicles that could not be classified

Site notes: